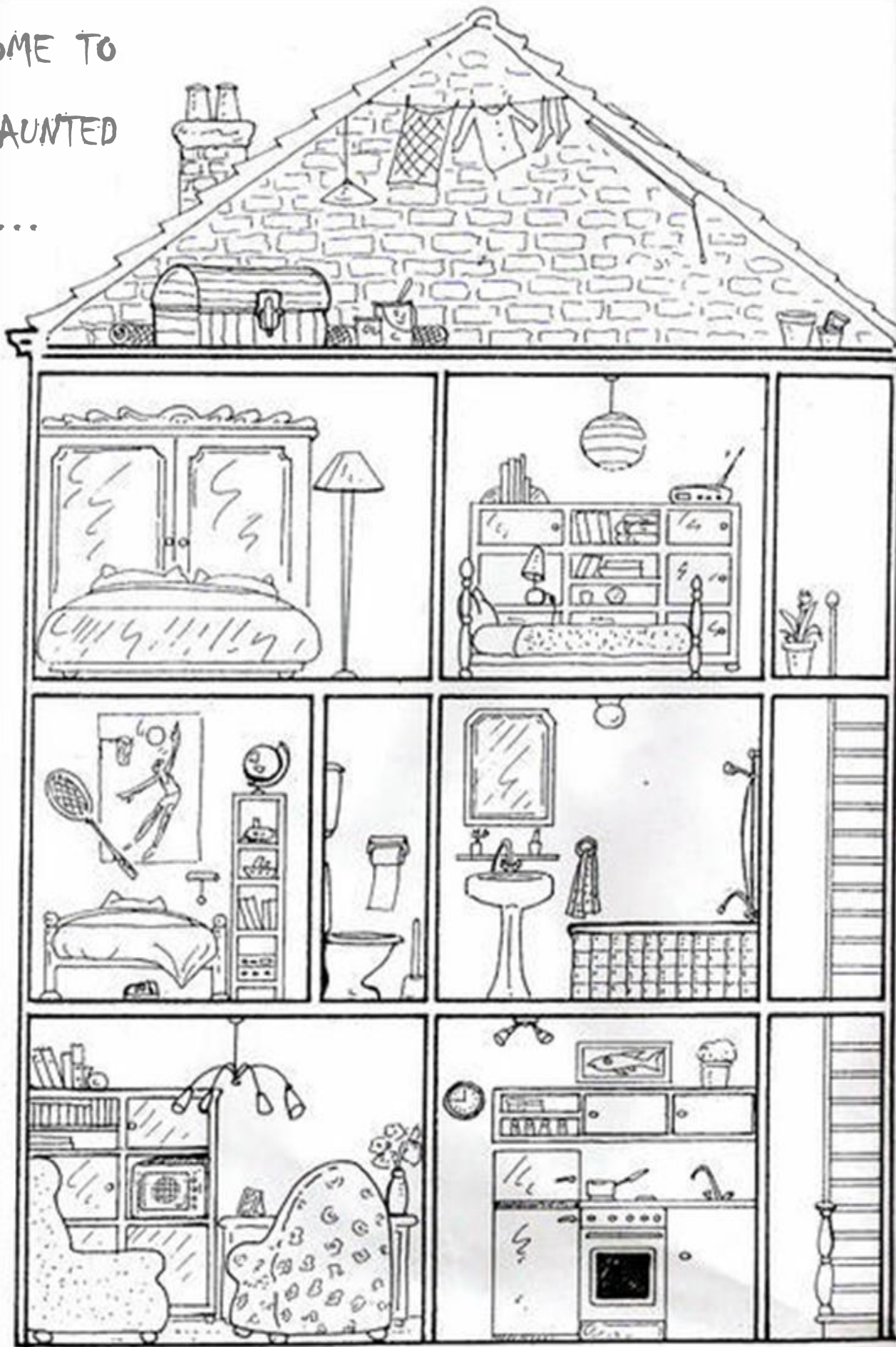
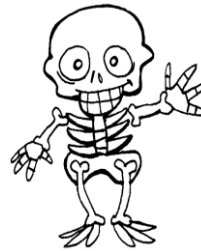


WELCOME TO
THE HAUNTED
HOUSE...



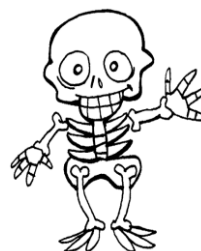
Read and glue the pictures.

The witch is in the kitchen.
The vampire is in a bedroom.
The monster is in the living-room.
The spider is on the stairs.
The ghost is in the attic.
The bat is in the bathroom.
The skeleton is in the toilet.



Read and glue the pictures.

The witch is in the kitchen.
The vampire is in a bedroom.
The monster is in the living-room.
The spider is on the stairs.
The ghost is in the attic.
The bat is in the bathroom.
The skeleton is in the toilet.



Look at the house and circle the good answer.

Is the skeleton in the kitchen ? Yes it is. No it isn't.

Is the monster in the living-room ? Yes it is. No it isn't.

Is the spider in the attic ? Yes it is. No it isn't.

Is the ghost in the toilet ? Yes it is. No it isn't.

Is the bat in the bathroom ? Yes it is. No it isn't.

Is the vampire in a bedroom ? Yes it is. No it isn't.

Is the witch on the stairs ? Yes it is. No it isn't.

Look at the house and circle the good answer.

Is the skeleton in the kitchen ? Yes it is. No it isn't.

Is the monster in the living-room ? Yes it is. No it isn't.

Is the spider in the attic ? Yes it is. No it isn't.

Is the ghost in the toilet ? Yes it is. No it isn't.

Is the bat in the bathroom ? Yes it is. No it isn't.

Is the vampire in a bedroom ? Yes it is. No it isn't.

Is the witch on the stairs ? Yes it is. No it isn't.